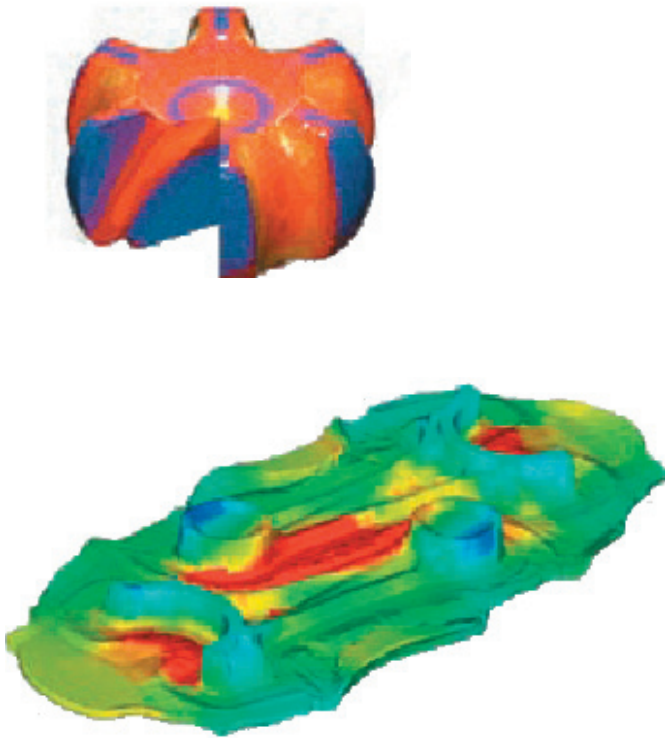


MSC.Marc Mentat Basic and Advanced

Topics:

- Introduction to MSC.Marc
- Review of Finite Element Analysis
- Linear Elastic Analysis
- Geometrically Nonlinear Analysis
- Material Nonlinear Analysis
- Modeling with Contacts
- Dynamic Analysis
- Buckling Analysis
- Contact Analysis
- Definition of contact bodies
- Contact and friction
- Some additional contact options
- Implementation of contact constraints
- Heat Transfer and Thermal Stress Analysis
- Advanced Workshop Problems
- Break Forming
- Super Plastic Forming
- Interference Fit
- Dynamics with Friction Heating
- Transient Cantilever Beam



Course Description

The purpose of this course is to introduce MSC.Marc user to both MSC.Marc and MSC.Marc Mentat by lectures and hands on modeling of nonlinear problems.

It also then enhances the current MSC.Marc user's understanding of modeling nonlinear problems with emphasis on contact by lectures and hands on modeling of nonlinear contact problems.

Anyone serious about doing non-linear FEA should consider this course.

Prerequisites:

- A basic knowledge of statics and strength of materials is highly recommended.
- Previous FEA knowledge is recommended.



For more information on this course please contact Riekert Leibbrandt 0861237837 or email r.leibbrandt@esteq.com